

PROJECT NAME:

**OCTOBER 7th MEMORIAL MONUMENT
DESIGN COMPETITION**

SUBMITTED TO:

TEL AVIV UNIVERSITY

DESIGNED BY: KEREN MILCHBERG | RAN GOLDMAN | YASHA (YAAKOV) SACK



A few months after the October 7th attack, while war raged and the fate of the hostages was still unknown, Tel Aviv University planted 7 new trees, a symbolic act representing hope and new life. Now, after the war has ended and all our hostages have returned home, we seek to provide a reflective expression of that "intuitive" tree planting from the war days. The monument acts as a mediator and a buffer between the daily campus routine and the space of commemoration. It is a long horizontal line connecting two elements: an existing tree avenue with a sunken path, and an empty (hollow) wall that can be passed through.

The Path and the Tree Avenue

The path is dug slightly into the earth as a gesture of bowing one's head, inviting an alternative route to the existing daily granite path.

This path forces visitors to change their walking pace, creating a physical and emotional experience of slowing down and observation.

The tree avenue now holds a central place between the two paths (the daily path and the sunken path). A dynamic is created between the sunken path, which holds and formally fixes the trees (representing death), and their natural tendency to renew and grow (representing life). In the middle, a bench functions as a threshold space, integrating bustling campus life into the monument's structure.

The Hollow Wall

On the other side of the sunken path stands a long, low wall that serves as a buffer against the greenery of the Gilman Building. This wall grows into a three-dimensional "empty wall" that visitors can pass through, becoming part of the emptiness themselves. Although it is merely a "shell" (a metaphor for the collapsed defense walls), the wall remains standing thanks to the passage of people, wind, and light.

Gathering Area

Exiting the wall's emptiness leads to a space wrapped in greenery designed for gathering and communion. From this perspective, the visitor faces a wall that is almost entirely opaque, except for a hanging plate engraved with the date 7.10.23—the monument's starting point. This area, located on the "other side" of the everyday, allows for both remembrance and dialogue among visitors.

Materiality and Spirit

The use of iron in this design does not express strength or resilience; instead, it represents a contour and a buffer that emphasizes the void and makes the absence present. The monument's power lies in its openness to the surroundings, allowing for movement, wind, and light to pass through it.





West-to-East view

Entrance
Gilman
Building

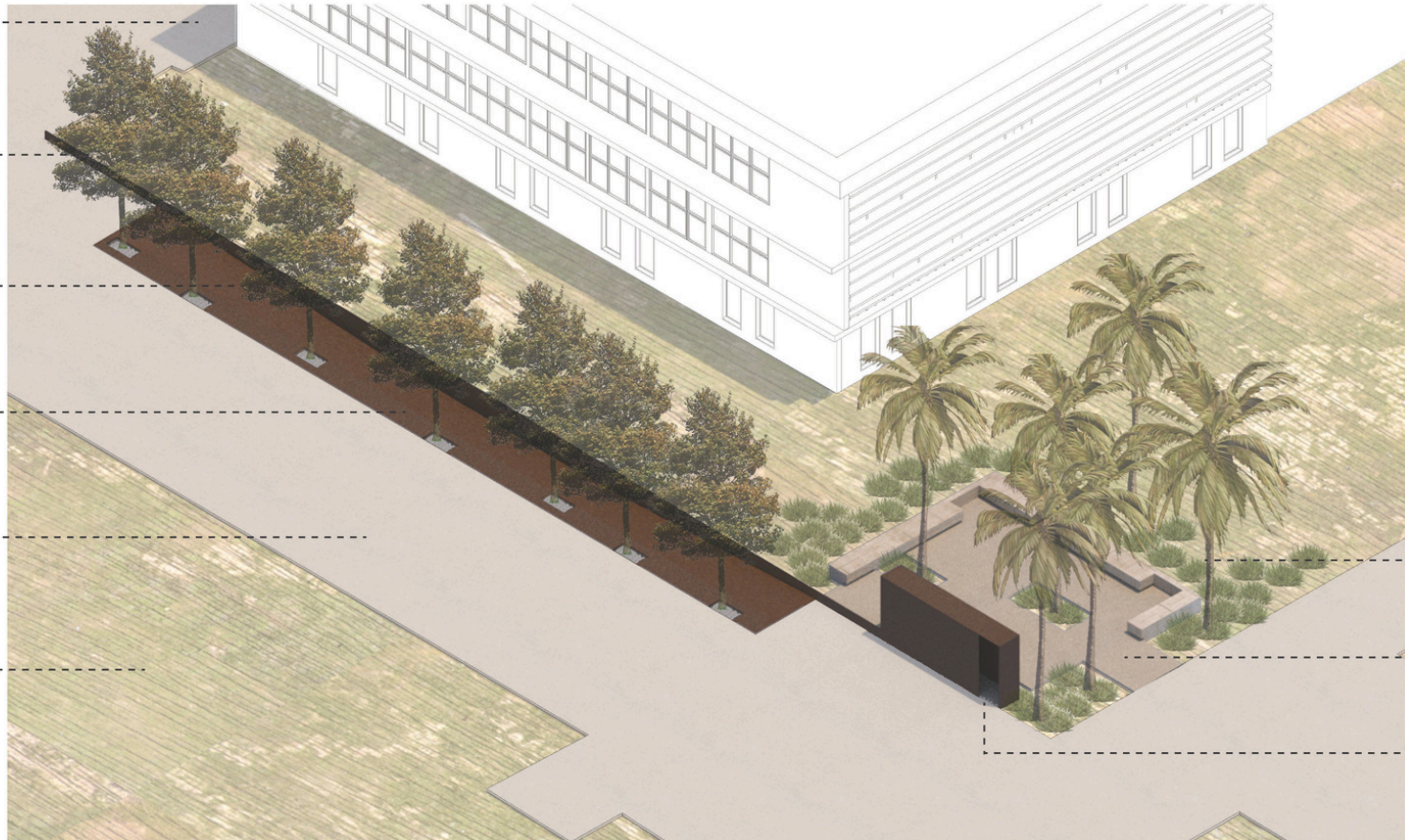
Low
Iron wall

Sunken
Path

Iron bench
7 Trees Ave.

Existing
Pathway

Central
Lawn



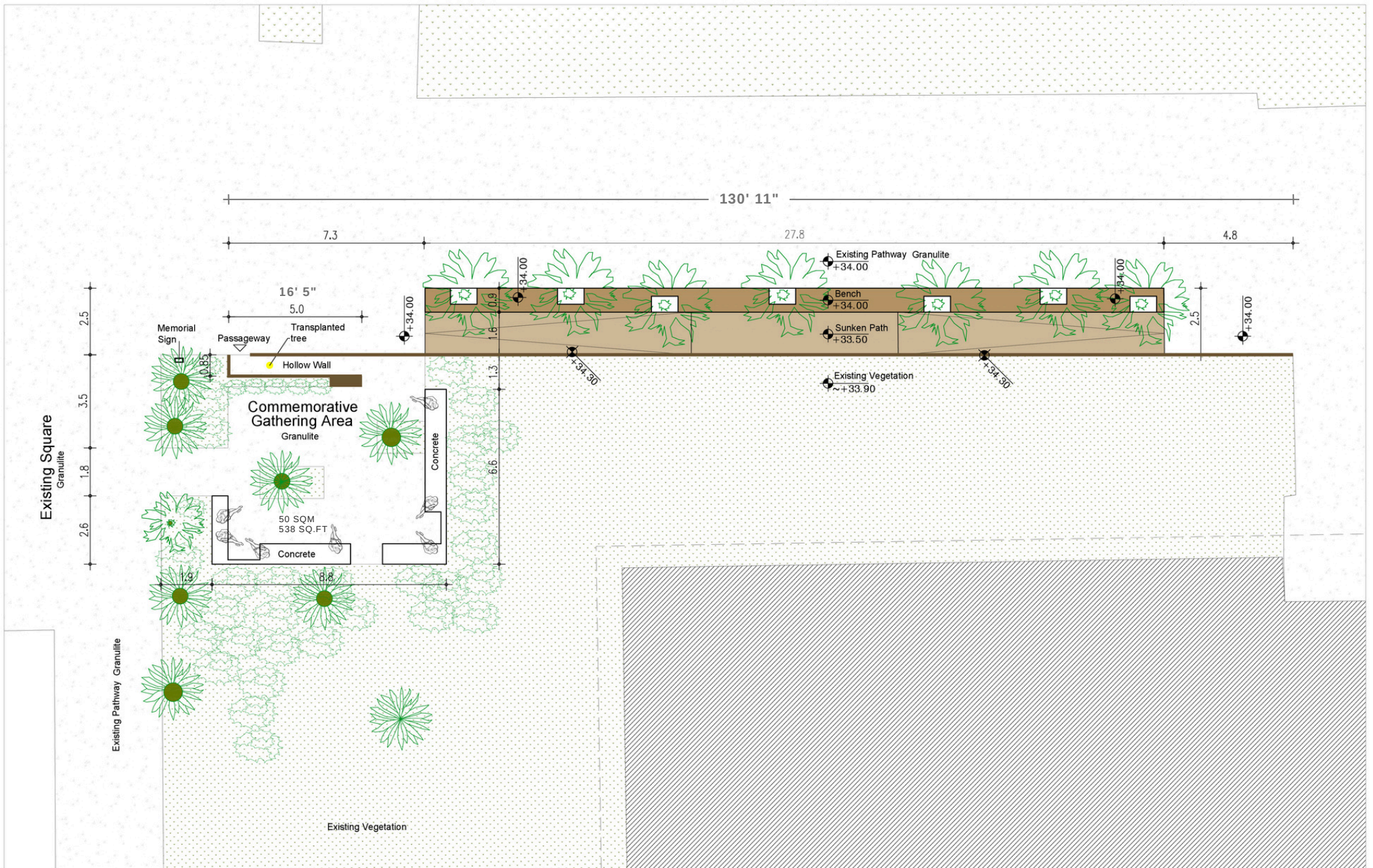
Existing
Palm Trees

Commemorative
Gathering area

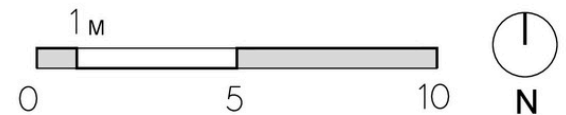
Passageway
through
Hollow Wall
2.2 Meters high
7' 2-5/8"

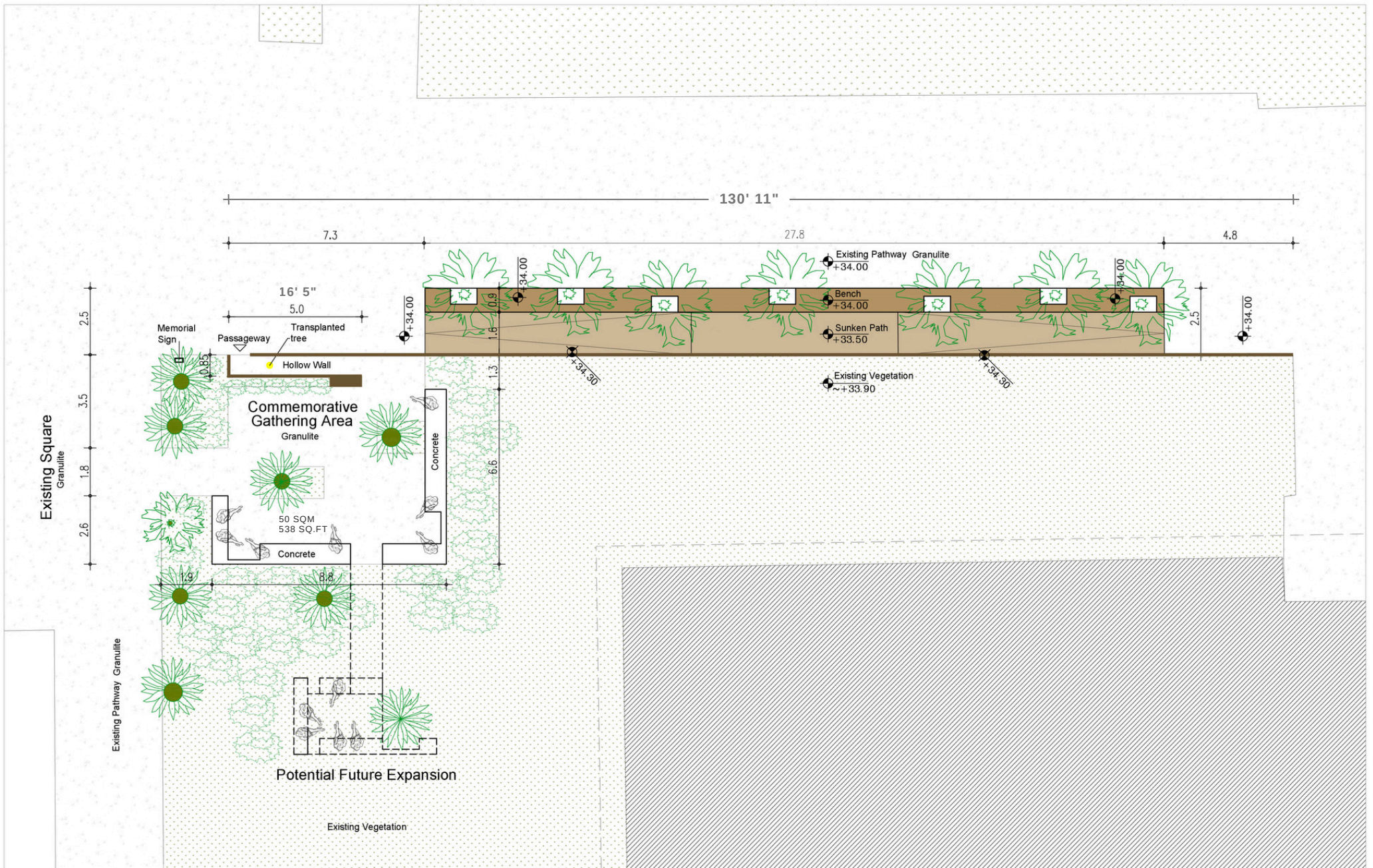
ORIENTATION MAP



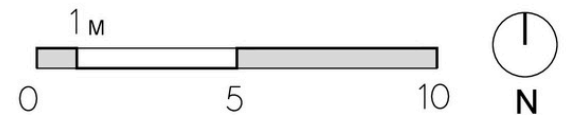


GENERAL PLAN





GENERAL PLAN



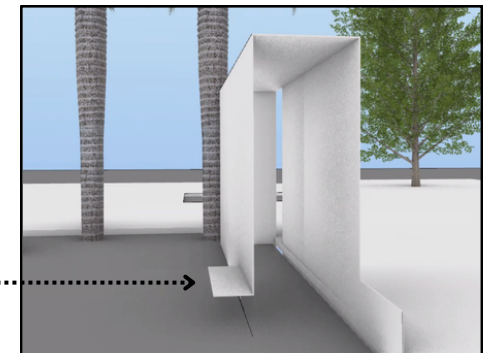


SOUTH-WEST VIEW



'HOLLOW WALL' VIEWS





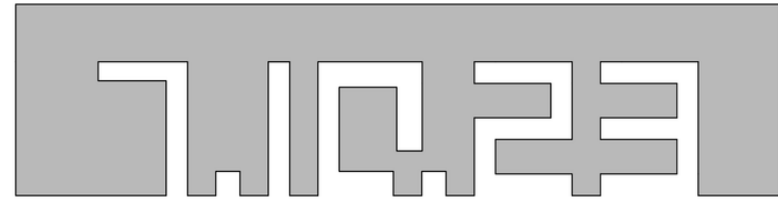
FOLDED IRON PLATE

COMMEMORATIVE GATHERING AREA





LASER-CUT OCTOBER 7TH DATE ON FOLDED IRON PLATE

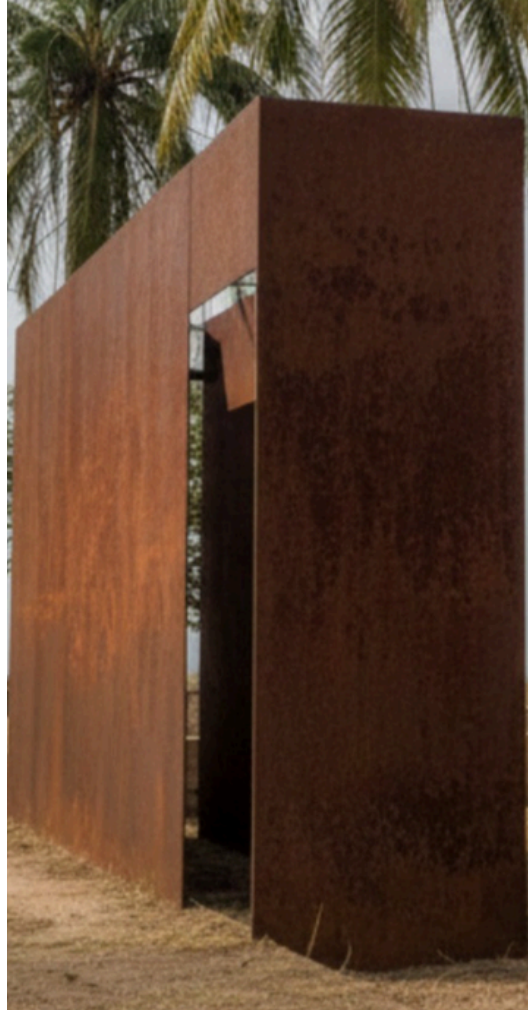


COMMEMORATIVE GATHERING AREA





EXPOSED AGGREGATE CONCRETE
'GRANULITE' SIMILAR TO THE
PAVEMENTS AT THE UNIVESITY



NATURALLY RUSTED BLACK
IRON / 'CORTIL' BACTERIAL
COATING TO STOP
CORROSION

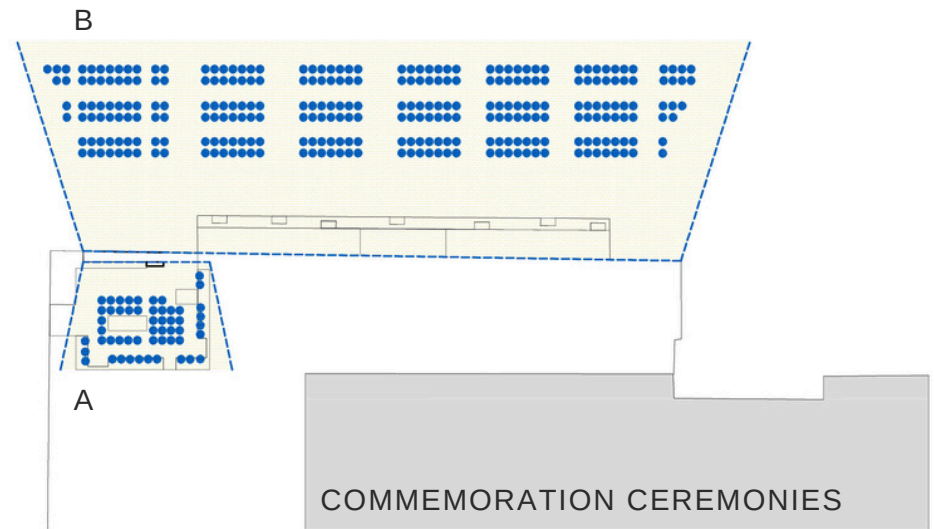
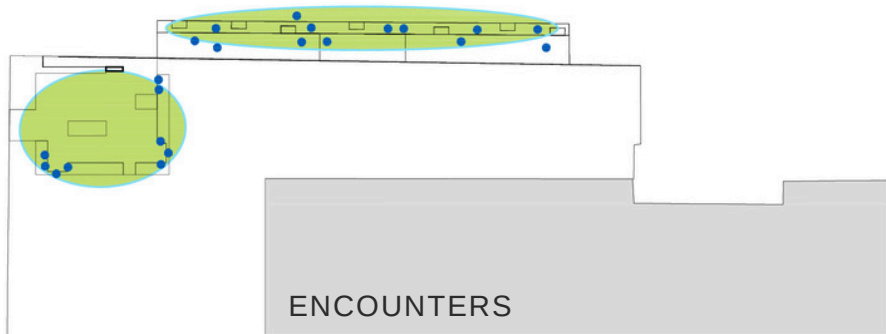
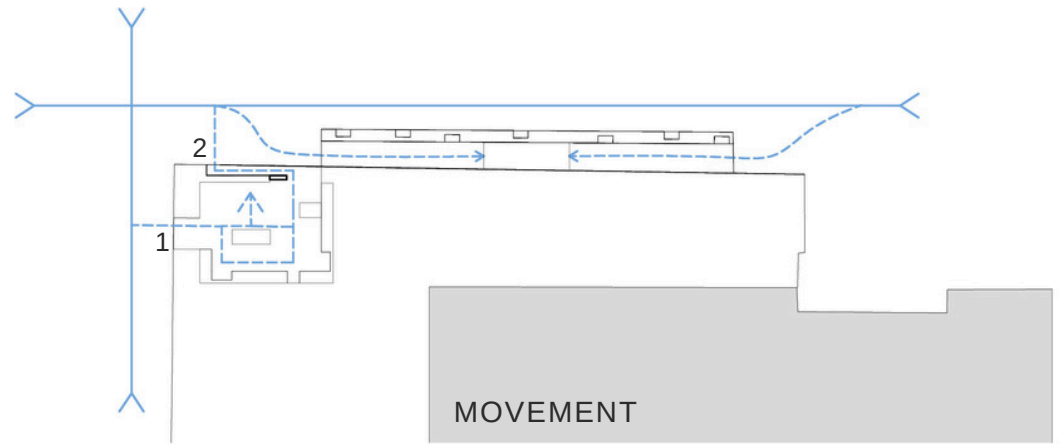
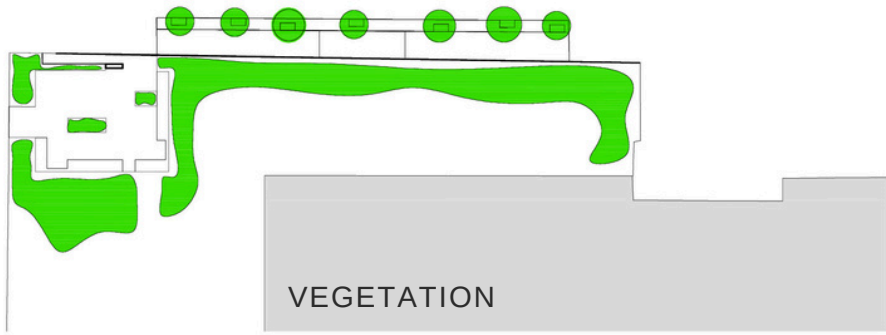
AN ENVIRONMENTALLY FRIENDLY
ISRAELI DEVELOPMENT

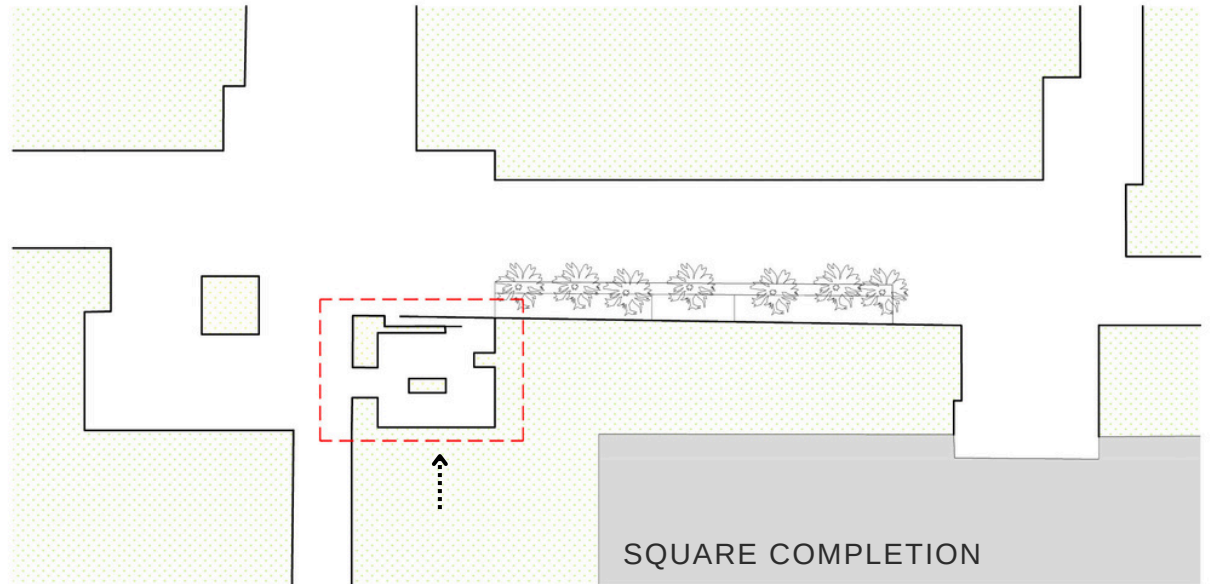
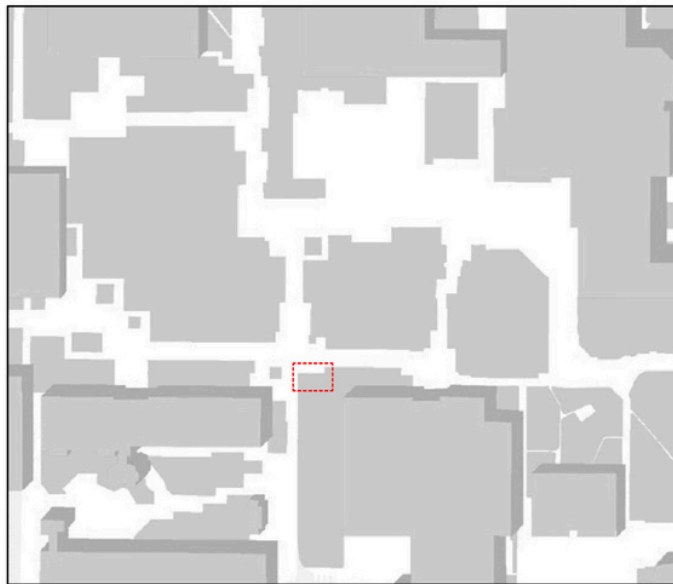
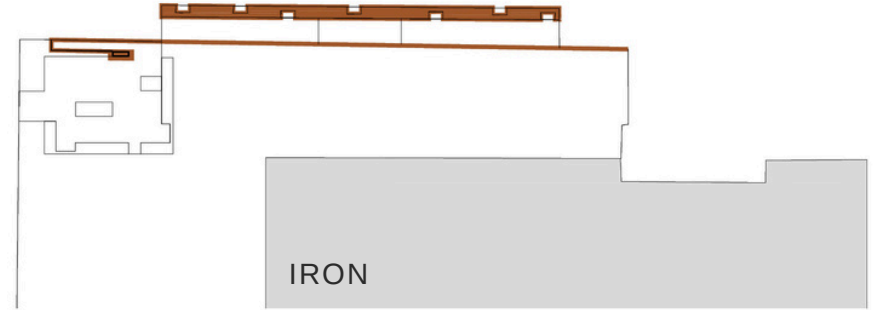
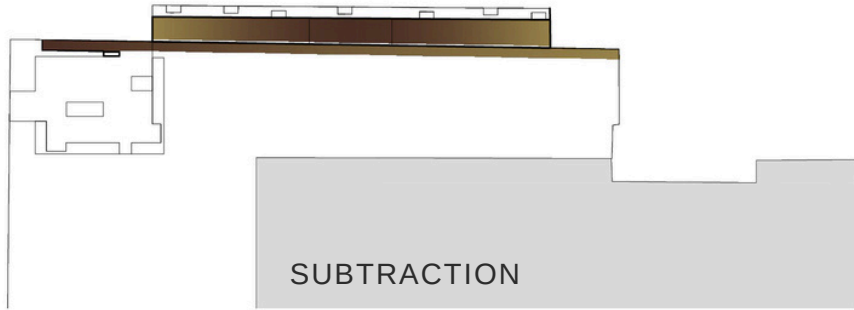


CONCRETE BENCHES WITH BROWN
PIGMENT IN THE COMMEMORATIVE
GATHERING AREA

MATERIALS





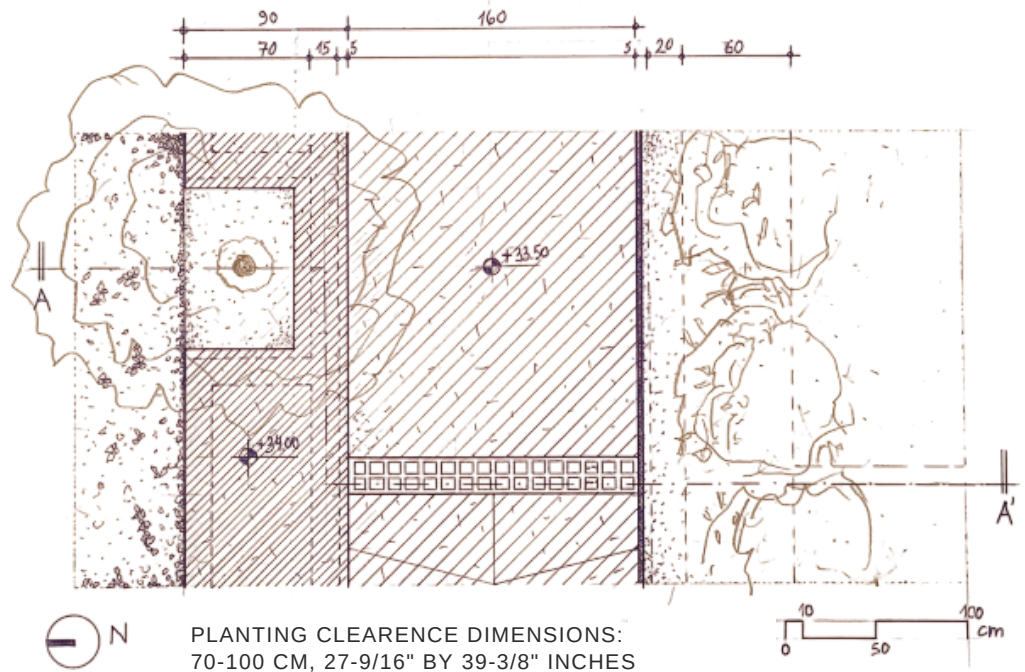
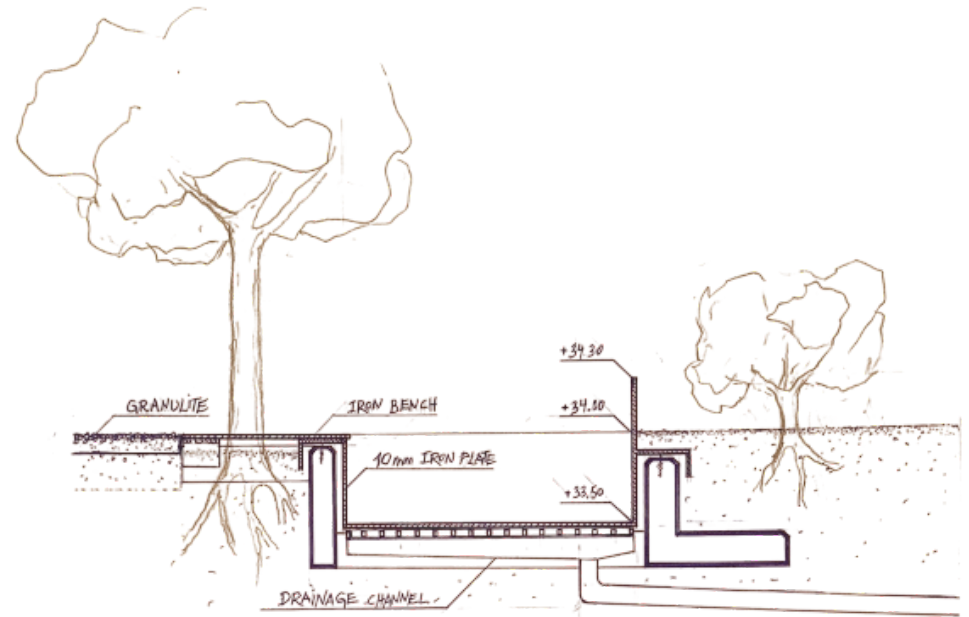




WEST-TO-EAST VIEW OF THE TREE AVENUE



THE TREE AVENUE



PLANTING CLEARANCE DIMENSIONS:
70-100 CM, 27-9/16" BY 39-3/8" INCHES



THANK YOU

